



# DP23S

## 58mm Portable Bluetooth Thermal Label Printer

### Product Features

#### Powerful and user-friendly label editing APP

Perfectly support 1D and 2D Barcode printing, complying with international standards; Easy to import Excel tables for bulk printing; Support multiple printing contents: symbols, pictures, logo, graphics, etc., high-speed printing improves working efficiency.

#### Provide various platforms and user-friendly interfaces

Provide multiple interfaces for Android,iOS, Windows, Web, etc., make the integration of customer manage system more easy; Support common explorers, like IE, Chrome, Firefox, etc.(No limits to IE)

#### Mini and portable, easy to carry

The size is 122×82×60mm only, light and handy, easy to carry without any limits.

#### OLED display demonstrates printer status clearly

With spontaneous OLED display, the printer status is clearly demonstrated, adapt easily to different working conditions.

#### Multiple connection modes

Support Bluetooth connecting to Android and iOS phones/PAD, USB connecting to PC, Android phone/PAD; Auxiliary NFC supports Bluetooth in quick pairing and connecting; Fully compatible with various smart phones, PAD, PC and special-purpose terminals for connecting and printing.



### Specifications

Description	Parameters
Display Type	OLED display
Print Method	Direct thermal line
Print Color	Black and white
Resolution	203 dpi
Dot per Line	384 dots/line
Print Speed	20 ~ 50mm/s
Full Power Printing	80 ~ 100m (12.5% print darkness)
Standby Time	About 3 years (power off)
Battery Capacity	1500mAh
Charge Mode	5V USB
Charge Time	4 ~ 5h
Power Bank Function	Support
Paper Type	Thermal paper/ Thermal synthetic paper
Paper Form	Roll paper

Description	Parameters
Paper Size	54(W) × dia.50 mm
Print Width	48mm
Paper Thickness	0.05 ~ 0.15 mm
Dimension	122(L) × 82(W) × 60(H)mm
Weight	250g
Standard Accessories	Power adapter, battery, paper adjusting plate, USB cable
IP Standard	IP54
Operating Temperature	0℃ ~ 45℃
Interface	Micro USB, Bluetooth (Android, iOS)
Command Set	LPAPI <sup>®</sup> , ESC/POS compatible with instruction sets
Location Mode	Up-down dual-reflex、up-down correlation
Self-check Function	Cover open, paper out, low battery, overtemperature
Print Contents	<ul style="list-style-type: none"><li>Text, picture, line, graphics</li><li>1D Barcode: CODE39, CODE128, EAN, UPC, other commonly used barcodes</li><li>2D Barcode: QR Code, PDF417, DataMatrix</li></ul>

### Applications

Being market-oriented, DeTong DP23 series printers have combined with various industries: Electric Power, Telecommunications, Scientific Research, Jewelry, Clothes Shoes & Bags, Logistics Warehouse, Equipment Manufacture etc., to provide high quality solutions on labeling management.

Discount Price Label

Price Tag

Electronic Materials

Apparel Industry



Download APP

DeTong Electronic Technology (ShangHai) Co., Ltd.  
Add : Rm 908, Building A, No.15 Changyi Rd, Baoshan District, Shanghai, China  
Tel : +86021-65111580  
Web : www.detonger.com  
E-mail : support@dothantech.com

Service Hotline  
+86400-823-6599



Follow us on WeChat





# DP30S

## 80mm Portable Bluetooth Thermal Label Printer

### Product Features

#### Powerful and user-friendly label editing APP

Perfectly support 1D and 2D Barcode printing, complying with international standards; Easy to import Excel tables for bulk printing; Support multiple printing contents: symbols, pictures, logo, graphics, etc., high-speed printing improves working efficiency.

#### Provide various platforms and user-friendly interfaces

Provide multiple interfaces for Android,iOS, Windows, Web, etc., make the integration of customer manage system more easy; Support common explorers, like IE, Chrome, Firefox, etc.(No limits to IE)

#### Mini and portable, easy to carry

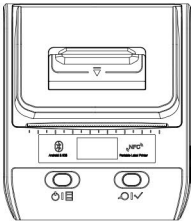
The size is 125×108×62mm only, light and handy, easy to carry without any limits.

#### OLED display demonstrates printer status clearly

With spontaneous OLED display, the printer status is clearly demonstrated, adapt easily to different working conditions.

#### Multiple connection modes

Support Bluetooth connecting to Android and iOS phones/PAD, USB connecting to PC, Android phone/PAD; Auxiliary NFC supports Bluetooth in quick pairing and connecting; Fully compatible with various smart phones, PAD, PC and special-purpose terminals for connecting and printing.



Android



iOS



Windows



Web

### Specifications

Description	Parameters
Display Type	OLED display
Print Method	Direct thermal line
Print Color	Black and white
Resolution	203 dpi
Dot per Line	576 dots/line
Print Speed	20 ~ 50mm/s
Full Power Printing	60 ~ 75 m (12.5% print darkness)
Standby Time	About 3 years (power off)
Battery Capacity	1500 mAh
Charge Mode	5V USB
Charge Time	4 ~ 5 h
Power Bank Function	Support
Paper Type	Thermal paper/ Thermal synthetic paper
Paper Form	Roll paper

Description	Parameters
Paper Size	80(W) × dia.50 mm
Print Width	72 mm
Paper Thickness	0.05 ~ 0.15 mm
Dimension	125(L) × 108(W) × 62(H) mm
Weight	290g
Standard Accessories	Power adapter, battery, paper adjusting plate, USB cable
IP Standard	IP54
Operating Temperature	0℃ ~ 45℃
Interface	Micro USB, Bluetooth (Android, iOS)
Command Set	LPAPI <sup>®</sup> , ESC/POS compatible with instruction sets
Location Mode	Up-down dual-reflex、up-down correlation
Self-check Function	Cover open, paper out, low battery, overtemperature
Print Contents	<ul style="list-style-type: none"><li>Text, picture, line, graphics</li><li>1D Barcode: CODE39, CODE128, EAN, UPC, other commonly used barcodes</li><li>2D Barcode: QR Code, PDF417, DataMatrix</li></ul>

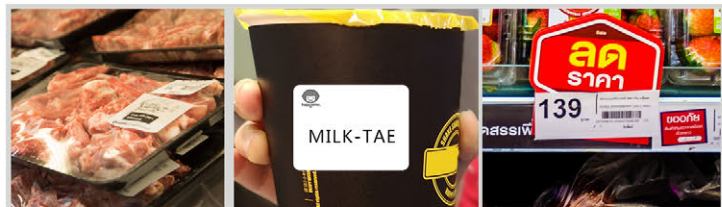
### Applications



Discount Price Label



Medical Label



Food Label



Apparel Label



Download APP

DeTong Electronic Technology (ShangHai) Co., Ltd.

Add : Rm 908, Building A, No.15 Changyi Rd, Baoshan District, Shanghai, China

Tel : +86021-65111580

Web : www.detonger.com

E-mail : support@dothantech.com

Service Hotline



+86400-823-6599



Follow us on WeChat



DT60S

Portable Thermal Transfer Label Printer





HD OLED Display



Infinite Adjustable Paper Width



Anti-Counterfeit Ribbon



Support Thick Label Printing

Product Advantages

**Thermal transfer ribbon for label printing**  
Excellent printing effect and longer storage time. (At least 10 years, depends on label materials);  
Unique ribbon with anti-counterfeit chip, ensures high quality of products, protects benefits of DeTong’ s partners and customers.

**Mini and portable, easy to carry**  
The size is 205×106×78mm only, light and handy, easy to carry.

**Powerful and user-friendly label editing APP**  
Print Barcode QR Code with international standards;  
Import Excel data realizes bulk print;  
Print symbol, image, logo, line, etc. with high print speed and work efficiency.

**Various optional accessories, strong functional upgrading**  
Print more clearly with optional 300 DPI print head;  
More choices of connections with optional WiFi module;  
Simultaneously print contents both from label showed and RFID chip.

**OLED display demonstrates printer status clearly**  
Spontaneous OLED display demonstrates printer status clearly.  
Adapt to different working conditions easily.

**Multiple connection modes**  
Connect to Android/iOS Phone and PAD via Bluetooth;  
Connect PC, Android Phone and PAD via USB cable;  
NFC makes the pairing and connection of Bluetooth more quickly;  
Compatible with various smart phones, PAD, PC and special-purpose terminals.



Specifications

Description	Parameters	Description	Parameters
Display Type	OLED display	Paper Size	54(W) × dia.65 mm
Print Method	Thermal transfer line	Print Width	48 mm
Print Color	Black and white	Paper Thickness	0.05 ~ 0.15 mm
Resolution	203 dpi/300 dpi (optional)	Dimension	205(L) × 106(W) × 78(H) mm
Dot per Line	384 dots/line	Weight	725 g
Print Speed	15 ~ 50 mm/s	Standard Accessories	Power adapter, battery, optional ribbon, USB cable
Full Power Printing	150~180 m (12.5% print darkness)	IP Standard	IP54
Standby Time	About 5 years (power off)	Operating Temperature	0℃ ~ 45℃
Battery Capacity	2600 mAh	Interface	Micro USB, Bluetooth (Android, iOS), 2.4G WiFi (optional)
Charge Mode	5V USB	Command Set	LPAPI <sup>®</sup> , CPCL, ESC/POS compatible with instruction sets
Charge Time	6 ~ 7 h	Location Mode	Reflection-Type, Correlation (optional)
Power Bank Function	Support	Self-check Function	Cover open, paper out, low battery, overtemperature
Roll Paper Type	Self-adhesive paper	Print Contents	<ul style="list-style-type: none"><li>Text, picture, line, graphics</li><li>1D Barcode: CODE-39, CODE-128, EAN, UPC, other common ones</li><li>2D Barcode: QR Code, PDF417, DataMatrix</li></ul>
Paper Form	Roll paper	RFID Printing	<div>UHF RFID900MHz, compatible with ISO18000-6C / EPC Gen2 (optional)</div> <div>HF RFID 13.56MHz, 14443-A / 15693 / NFC (optional)</div>

APPLICATIONS

Cable Label



DDF Shelf Label



Flag-shaped Label



Manufacturing Label



Colorful Price Label



Jewelry Label



Customized Ribbon



Customized Label





Download APP

DeTong Electronic Technology (ShangHai) Co., Ltd.

Add : Rm 908, Building A, No.15 Changyi Rd, Baoshan District, Shanghai, China

Tel : +86021-65111580

Web : www.detonger.com

E-mail : support@dothantech.com

Service Hotline

+86400-823-6599



Follow us on WeChat